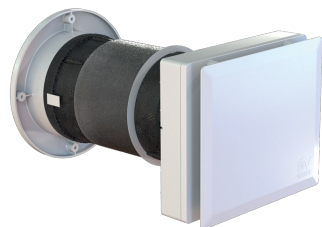


Technical Data Sheet

CODE 12435

VORT HRW 40 MONO EVO

Decentralised heat recovery units



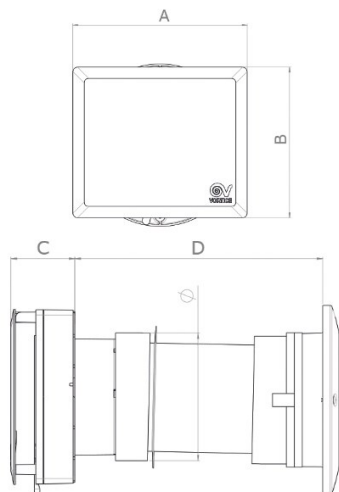
Certifications



TECHNICAL AND PERFORMANCE DATA

Absorbed Current max (A)	0,05	Max delivery at max speed (m ³ /h)	40
Absorbed Power max (W)	5	Maximum thermal efficiency (%)	90
Filter class	ISOCoarse 65%	Potenza sonora Lw [dB (A)] - max vel	49,3
Frequency (Hz)	50-60	Potenza sonora Lw [dB (A)] - min vel	36,5
Insulation Class	II°	Pressione sonora Lp [dB (A)] 3m - med vel	25,4
Max ambient temperature for continuous operation (°C)	30	Pressure - 1st speed (mmH2O)	1,7
Nominal Diameter (mm)	160	Pressure - 1st speed (Pa)	17
Voltage (V)	220-240	Pressure max - max speed (mmH2O)	4,8
Weight (Kg)	3,30	Pressure max - max speed (Pa)	47
Delivery 1st speed (l/s)	4,2	Sound power Lw [dB(A)] - mid speed	42,9
Delivery 1st speed (m ³ /h)	15	Sound pressure level Lp [dB (A)] 3m - max speed	31,8
Max delivery at max speed (l/s)	11,1	Sound pressure level Lp [dB (A)] 3m - min speed	19

DIMENSIONS



Diametro ϕ (mm)	146
Size A (mm)	231
Size B (mm)	200
Size C (mm)	73
Size D (mm)	283

PER INFORMAZIONI:

Servizio al Cliente: tel +39 02 90699395 premendo 1 dopo messaggio registrato (consulenza su prodotti e impianti)

Pre & Post Vendita: fax +39 02 90699302

Email prevendita: prevendita@vortice-italy.com

Technical Data Sheet

CODE 12435

VORT HRW 40 MONO EVO

Decentralised heat recovery units



DESCRIPTION

ACCESSORIES



C TEMP

Code 12992



C HCS

Code 12994



TUBO PVC D.160 L=700 (HRW 20)

Code 22599



KIT FTR ISO COARSE 65% (G3) D.127X10

Code 22466



MWS

Code 21148



RGR

Code 21190



WA

Code 21191



WSG-INOX

Code 21192



WSG-W

Code 21193



FTR ePM10 50% (M5) d.155X40

Code 21926

PER INFORMAZIONI:

Servizio al Cliente: tel +39 02 90699395 premendo 1 dopo messaggio registrato (consulenza su prodotti e impianti)

Pre & Post Vendita: fax +39 02 90699302

Email prevendita: prevendita@vortice-italy.com